





£255,000

Located in Fenny Stratford is this two-bedroom unique circa 1880's end of terrace. The property comprises a lounge with open fireplace, kitchen/diner, family bathroom and rear garden. An ideal first time buy.

Property Description

STORM PORCH

Steps rising to the front door, security light.

ENTRANCE HALL

Via opaque glazed front door, radiator, follow through to kitchen/diner.

LOUNGE

Double glazed bay window to the front, wood effect flooring, coving to ceiling, radiator, picture rails, character open fireplace with wooden surround and tiled hearth.

KITCHEN/DINER

Double glazed window to rear. Fitted with a range of storage cupboards at base and eye level, rolled edge work surface areas, wall mounted boiler, stainless steel one and a half bowl sink with drainer and mixer tap over, understairs storage cupboard with power and lighting, archway to lounge, space for cooker, space for fridge, freezer and washing machine, coving to ceiling, stairs rising to the first floor, door to the rear.

LANDING

Double glazed window to side, coving to ceiling, doors to bedrooms and bathroom.

BEDROOM ONE

Double glazed window to front, coving to ceiling, fitted wardrobes, picture rail, radiator.

BEDROOM TWO

Double glazed window to rear, coving to ceiling, radiator.

BATHROOM

Frosted double glazed window to rear, comprising low level w.c., wash hand basin, panelled bath with shower over, heated towel rail, tiled floor.

OUTSIDE

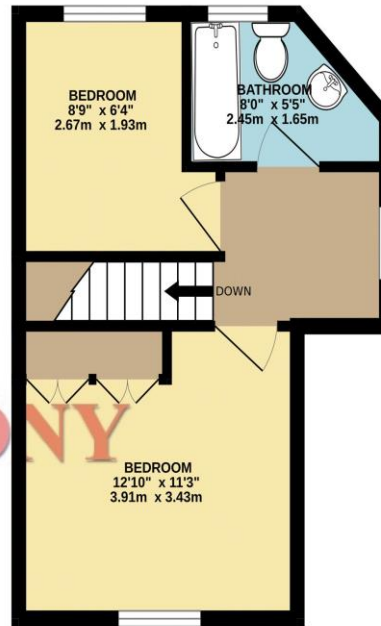
REAR GARDEN

Multi layered, mainly laid to lawn, power socket, enclosed by brick wall and wooden fencing,

GROUND FLOOR
295 sq.ft. (27.4 sq.m.) approx.

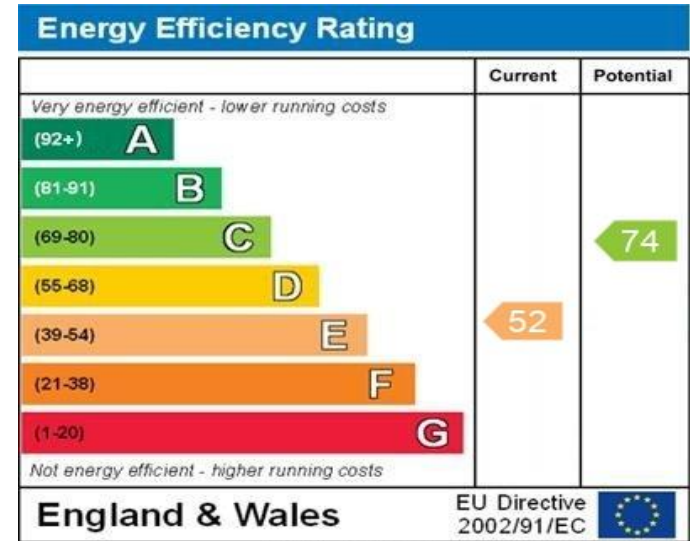


1ST FLOOR
276 sq.ft. (25.6 sq.m.) approx.



TOTAL FLOOR AREA: 570 sq.ft. (53.0 sq.m.) approx.

Whilst every attempt has been made to ensure the accuracy of the floorplan contained here, measurements of doors, windows, rooms and any other items are approximate and no responsibility is taken for any error, omission or mis-statement. This plan is for illustrative purposes only and should be used as such by any prospective purchaser. The services, systems and appliances shown have not been tested and no guarantee as to their operability or efficiency can be given.
Made with Metropix ©2024



WWW.EPC4U.COM

MONEY LAUNDERING REGULATIONS 2017 intending purchasers will be asked to produce identification and proof of financial status when an offer is received. We would ask for your co-operation in order that there will be no delay in agreeing the sale.

THE CONSUMER PROTECTION REGULATIONS 2008 The Agent has not tested any apparatus, equipment, fixtures and fittings or services and so cannot verify that they are in working order or fit for the purpose. A Buyer is advised to obtain verification from their Solicitor or Surveyor. References to the Tenure of a Property are based on information supplied by the Seller. The Agent has not had sight of the title documents. A Buyer is advised to obtain verification from their Solicitor. You are advised to check the availability of this property before travelling any distance to view. We have taken every precaution to ensure that these details are accurate and not misleading. If there is any point which is of particular importance to you, please contact us and we will provide any information you require. This is advisable, particularly if you intend to travel some distance to view the property. The mention of any appliances and services within these details does not imply that they are in full and efficient working order. These particulars are in draft form awaiting Vendors confirmation of their accuracy. These details must therefore be taken as a guide only and approved details should be requested from the agents

190 Queensway Bletchley Milton Keynes MK2 2ST
01908 648 666 | bletchley@maea.co.uk